

Sertly

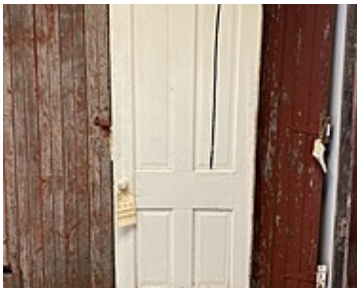
**Antiquities Storehouse
Wood Doors**

28 April 2023



Wood Doors

Subfolders (total): 0



#121. 30 x 78 x 1 1/8

Tags: Chippy/Cracked Paint, Unique, Needs Work

Notes: Very unique door in thickness and details.



#339. 30 x 77 1/2 x 1 3/8

Tags: Chippy/Cracked Paint

Notes: Old farmhouse in Northern Iowa



#346 32x79 1/2x1 3/8

Notes: has a butler swing



#369 32x80x1 3/8



#371 32x79 1/4x1 3/8



#374 31 7/8x79 1/4x1 3/8



#387 30x80 1/4x1 3/8



#49 27 1/4 x 79 1/4 x 1 3/8

Notes: Blue Earth, MN



#506 32 x 78 x 1 3/8

Tags: Chippy/Cracked Paint

Notes: Dumont, IA



#539 30x83 1/4x1 3/4



#54. 31 1/2 x 80 1/4 x 1 3/4

Tags: Exterior

Notes: Heavy exterior door. Mason City, Iowa



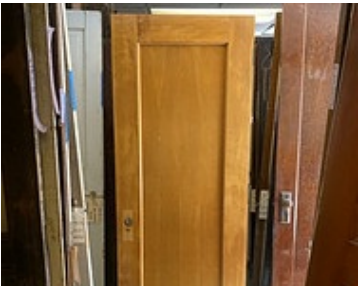
#614 31 5/8 x 83 5/8 x 1 5/8



#635 17 7/8 x 79 1/2 x 1 3/8



#637 23 3/4 x 78 x 1 3/8



#648 29 3/4 x 79 3/8 x 1 3/4



#654 23 3/4 x 79 1/4 x 1 3/8



#655 28 x 78 3/4 x 1 3/8



#658 26 x 79 x 1 1/8

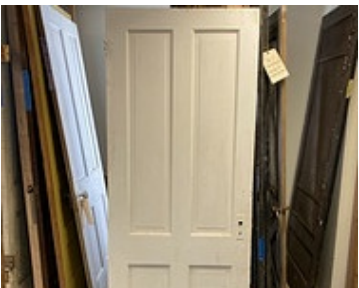


#659 64 3/4 x 84 1/4 x 2 (32 1/2 & 32)

Tags: parlor door



#660 19 7/8 x 80 x 1 3/8



#661 31 3/4 x 78 1/2 x 1 3/8



#663 26 1/2 x 79 3/4 x 1 3/8



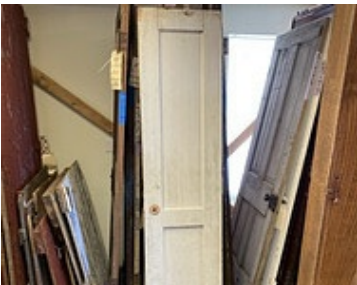
#664 23 1/4 x 79 1/2 x 1 3/8



#665 23 7/8 x 79 5/8 x 1 3/8



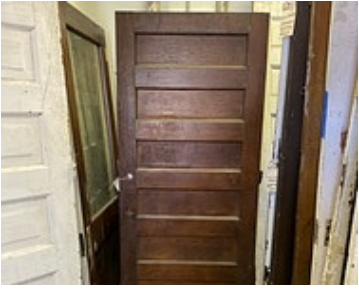
#667 24 x 78 3/8 x 1 3/8



#670 17 3/4 x 79 3/4 x 1 3/8



#672 29 3/4 x 79 3/4 x 1 3/8



#675 35 3/4 x 82 1/2 x 1 3/4



#680 29 7/8 x 88 1/2 x 1 3/4



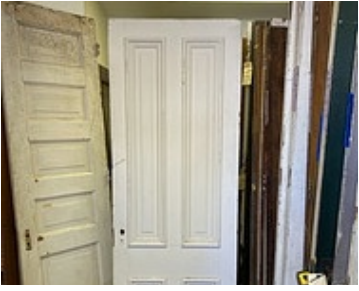
#681 28 x 89 3/4 x 1 3/8



#682 27 3/4 x 87 x 1 3/8



#683 23 1/2 x 89 3/4 x 1 3/4



#684 32 1/4 x 88 x 1 3/8



#685 31 3/4 x 86 7/8 x 1 3/8



#686 34 x 93 3/4 x 1 3/4



#688 34 5/8 x 94 1/2 x 2 3/16



#689 32 x 90 1/2 x 1 3/4



#690 33 1/8 x 88 1/8 x 1 1/2



#691 26 x 83 x 1 3/8



#692 31 1/2 x 89 3/4 x 1 3/8



#694 30 1/2 x 88 1/2 x 1 3/4

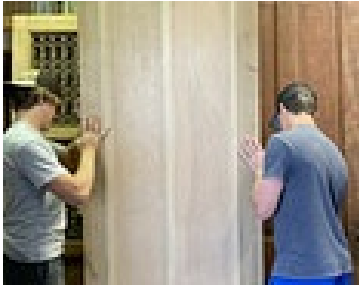


#695 35 5/8 x 79 7/8 x 1 3/8



#707 31 3/4 x 96 x 1 3/4

Notes: These are a good buy only. Not Antique but older and styled to represent antique doors. Were stored in a warehouse in St Louis....



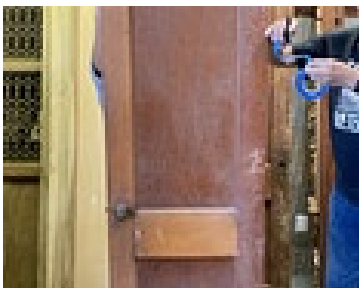
#708 32 x 96 x 1 3/4

Notes: These are a good buy only. Not Antique but older and styled to represent antique doors. Were stored in a warehouse in St Louis....



#709 29 3/4 x 96 x 1 3/4

Notes: These are a good buy only. Not Antique but older and styled to represent antique doors. Were stored in a warehouse in St Louis....



#726 23 3/4 x 78 1/4 x 1 3/8



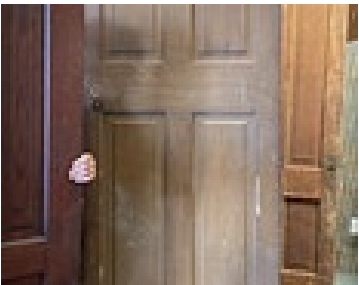
#733 36 x 79 1/2 x 1 3/4



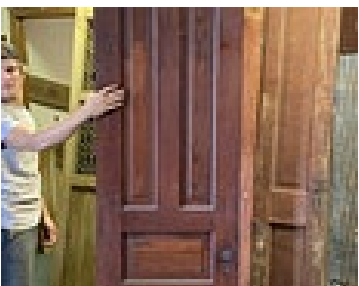
#734 31 3/4 x 79 x 1 3/4



#740 24 x 78 3/4 x 1 3/8



#765 30 3/4 x 89 x 1 1/8



#766 24 x 90 x 1 3/8



#773 30 x 89.5 x 1 3/4



#774 31 3/4 x 79 x 1 3/8



#776 23 3/4 x 79 x 1 3/8



#778 46 x 92 1/4 x 1 3/4

Tags: Unique, 96 Tall, 89 inches and taller, Architectural Details

Notes: Tall 4 door Bottom doors 92 1/4 L x 23 W x 1 3/4 thick Top doors Left door (at tallest and widest point) 23 3/4 W x 28 1/8 x 1 3/4 thick Ri...



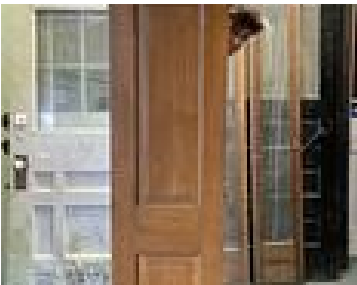
#784 30 x 83 3/4 x 1 1/8



#789 29 1/4 x 88 3/4 x 1 3/4



#837 30 x 79 1/4 x 1 3/8



#839 16 3/4 x 79 3/4 x 1 3/8



#84. 24 x 72 1/2 x 1 1/8

Tags: Chippy/Cracked Paint

Notes: Great door from an old farmhouse in Ackley, Iowa



#856 23 3/4 x 89 x 1 3/8



#862 30 x 81 3/4 x 1 3/8



#864 36 1/4 x 83 3/4 x 1 5/8



#865 23 3/4 x 88 1/4 x 1 3/8



#870 27 3/4 x 90 3/4 x 2 1/2

Tags: Architectural Details

Notes: Use as a pair with #871 or by itself. Missing a top panel board on backside



#871 27 1/4 x 89 1/2 x 2 1/4

Tags: Architectural Details

Notes: Use by itself or with door number 870. Missing top board panel on backside.



#880 30 x 78 3/4 x 1 3/8



#881 29 3/4 x 79 1/2 x 1 3/8

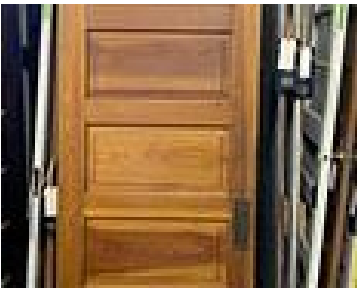


#897 60 3/8 x 83 x 1 5/8

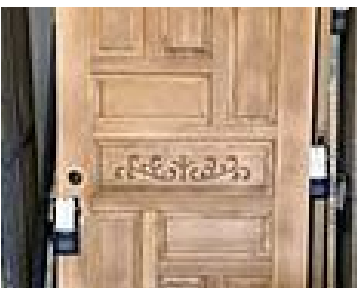
Notes: Large pocket door



#902 38 x 104 1/2 x 2 1/4



#905 31 5/8 x 84 1/4 x 1 3/8



#907 35 3/4 x 78 3/4 x 1 3/4



#908 29 5/8 x 83 5/8 x 1 3/8

