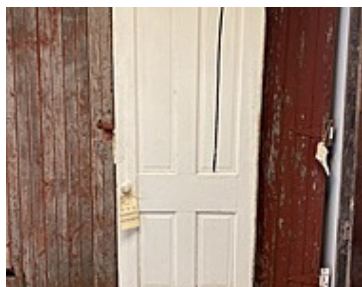




Wood Doors

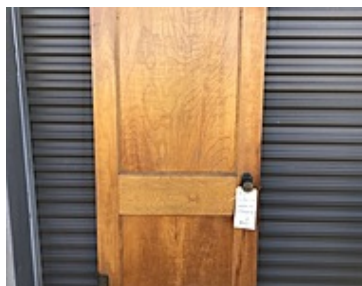
Subfolders (total): 0



#121. 30 x 78 x 1 1/8

Tags: Chippy/Cracked Paint, Unique, Needs Work

Notes: Very unique door in thickness and details.



#237 32 x 79 1/2 x 1 3/4

Notes: Newton, IA



#244 30 1/4 x 77 3/4 x 1 3/8

Notes: Copper hardware



#270. 32 x 84 x 1 3/4

Tags: Exterior, Ready to Hang

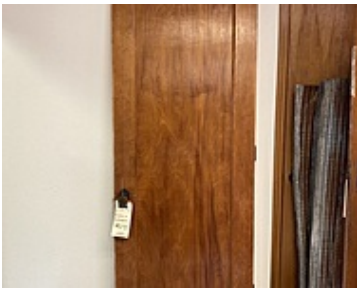
Notes: From a Mansion in Newton, Iowa. Condition of wood is EXCELLENT!



#271 32 x 84 1/2 x 1 3/4

Tags: Exterior, Ready to Hang

Notes: From a Mansion in Newton, Iowa. The white side can either be as is with the cracked paint look or stripped. Condition of wood is...



#272. 32 x 83 3/4 x 1 3/4

Tags: Exterior, Ready to Hang

Notes: From a Mansion in Newton, Iowa. The white side can either be as is with the cracked paint look or stripped. Condition of wood is...



#276 & 275

Tags: Unique, Ready to Hang, 89 inches and taller

Notes: HAS A KEY! Beautiful White walnut doors that nestle into each other. Use as pocket doors or a large barn slider. \$5,000 as a set. Will no...



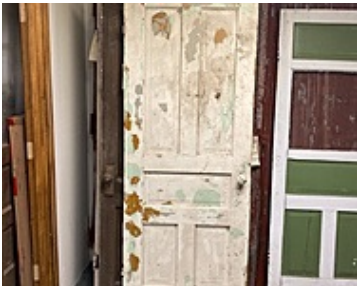
#279 & #280 36 x 96 x 2 1/4

Tags: 89 inches and taller

Notes: Peoria, Illinois. Can be sold separate for 2,500.00 White walnut.
Mortise & tenon



#3 30 x 77 1/2 x 1 1/8



#3.1 30 x 79 5/8



#307 36 1/4 x 84 x 1 3/4

Tags: Chippy/Cracked Paint, Exterior

Notes: Oelwein, IA uneven cut up top



#338 32 x 80 1/4 x 1 1/4

Notes: Garner, IA. Old farmhouse before it was demolished.



#339. 30 x 77 1/2 x 1 3/8

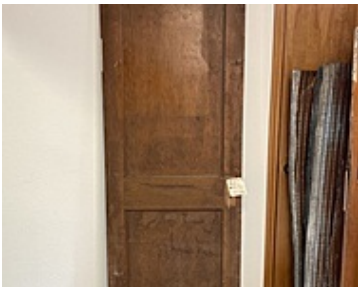
Tags: Chippy/Cracked Paint

Notes: Old farmhouse in Northern Iowa



#346 32x79 1/2x1 3/8

Notes: has a butler swing



#36. 30 x 78 1/4 x 1 3/8

Notes: Mason City, Iowa.



#369 32x80x1 3/8



#371 32x79 1/4x1 3/8



#374 31 7/8x79 1/4x1 3/8



#384 30 1\8 x 79 3\4 x 1 3\8



#387 30x80 1/4x1 3/8



#402 32 1/8x80x1 3/8



#450 28 1/4x80x1 3/8



#455 30x78 1/2x1 3/8



#47 30 x 78 x 1 3/8

Tags: Ready to Hang

Notes: Part of a set from Mason City, IA. Ok to break up set. Door knob can be purchased from a reproduction site or Etsy.



#484 29 1/2 x 77 3/4 x 1 3/8 29 7/8 x 77 1/4 x 1 3/8



#49 27 1/4 x 79 1/4 x 1 3/8

Notes: Blue Earth, MN



#506 32 x 78 x 1 3/8

Tags: Chippy/Cracked Paint

Notes: Dumont, IA



#539 30x83 1/4x1 3/4



#54. 31 1/2 x 80 1/4 x 1 3/4

Tags: Exterior

Notes: Heavy exterior door. Mason City, Iowa



#552 30 3/4 x 79 3/4 x 1 3/8

Tags: pocket door, parlor door

Notes: We do not have the set! We only have one



#600 31 7/8 x 79 3/8 x 1 3/8



#611 32 3/8 x 84 x 2



#613 34 1/8 x 81 5/8 x 1 3/4



#614 31 5/8 x 83 5/8 x 1 5/8



#635 17 7/8 x 79 1/2 x 1 3/8



#636 30 x 78 3/4 x 1 3/8



#637 23 3/4 x 78 x 1 3/8



#67 31 1/2 x 94 1/2 x 1 3/8

Tags: Chippy/Cracked Paint, Unique, 96 Tall, 89 inches and taller

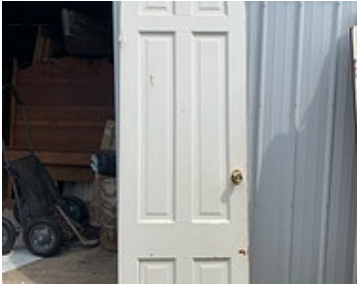
Notes: Being stripped and will be prepped and ready for paint or stain.
Unique 8' tall door. Rare find for a solid wood door.



#7. 29 3/4 x 78 1/4 x 1 3/8

Tags: Chippy/Cracked Paint

Notes: Came from Mason City, IA. Beautiful cracking paint.



30 x 106 3/4 x 1 3/4

Tags: Unique, 96 Tall, 89 inches and taller

Notes: Church in Fulton Illinois White Steeple door 30 W x 106 3/4 L (tallest point) x 1 3/4 thick



92 1/4 x 23 x 1 3/4

Tags: Unique, 96 Tall, 89 inches and taller, Architectural Details

Notes: Tall 4 door Bottom doors 92 1/4 L x 23 W x 1 3/4 thick Top doors Left door (at tallest and widest point) 23 3/4 W x 28 1/8 x 1 3/4 thick Ri...



Church Steeple Door



Double Church Steeple Door