

Inventory Summary

Item Name	Quantity
#121. 30 x 78 x 1 1/8	1
#123 29 7/8 x 77 1/8 x 1 3/8	1
#132 29 5/8 x 77 1/2 x 1 3/8	1
#135 29 7/8 x 71 3/4 x 1 1/2	1
#161 31 1/4 x 82 1/2 x 1 3/8	1
#162 29 x 75 1/2 x 1 3/8	1
#164 30 1/8 x 78 1/4 x 1 3/8	1
#17 32 x 84 x 1 3/8	1
#171. 32 x 80 1/2 x 7/8	1
#188 30 x 78 3/4 x 1 1/4	1
#193. 30 x 78 x 1 3/8	1
#194 29 7/8 x 76 7/8 x 1 3/8	1
#20. 35 3/4 x 75 x 1 3/4	1
#237 32 x 79 1/2 x 1 3/4	1
#24 29 3/4 x 84 1/4 x 1 3/4	1
#244 30 1/4 x 77 3/4 x 1 3/8	1
#252 30 x 83 x 1 3/8	1
#254 30 x 82 3/4 x 1 3/8	1
#270. 32 x 84 x 1 3/4	1
#271 32 x 84 1/2 x 1 3/4	1
#272. 32 x 83 3/4 x 1 3/4	1
#279 & #280 36 x 96 x 2 1/4	1
#3 30 x 77 1/2 x 1 1/8	1
#3.1 30 x 79 5/8	1

#307 36 1/4 x 84 x 1 3/4	1
#32 24 x 77 x 1 3/8	1
#333 32 1/4 x 83 x 1 3/4	1
#337. 30 1/8 x 78 x 1 3/8	2
#338 32 x 80 1/4 x 1 1/4	1
#339. 30 x 77 1/2 x 1 3/8	1
#340. 28 x 77 3/8 x 1 3/8	1
#345. 35 3/4 x 82 x 1 3/4	1
#346 32x79 1/2x1 3/8	1
#349 29 1/4x79 1/8x1 3/8	1
#351 30x78x1 3/8	1
#36. 30 x 78 1/4 x 1 3/8	1
#369 32x80x1 3/8	1
#370 28 x 79 1\4 x 1 3\8	1
#371 32x79 1/4x1 3/8	1
#372 31 7/8x79x1 3/8	1
#374 31 7/8x79 1/4x1 3/8	1
#378 30x78x1 3/8	1
#379 27 7/8x78 1/4x1 3/8	1
#379 30x79 1/2x1 3/8	1
#382 34 3/8 x 82 x 1 7/8	1
#384 30 1\8 x 79 3\4 x 1 3\8	1
#386 30 x 80 1/8 x 1 3/8	1
#387 30x80 1/4x1 3/8	1
#39 30 x 80 x 1 3/8	1
#393 24 1/8x80x1 3/8	1
#396 27 3/4x80 1/2x1 3/8	1
#399 30x79 1/4x1 3/8	1

#40. 23 3/4 x 78 3/4 x 1 3/8	1
#401 34 1/2x82x1 7/8	1
#402 32 1/8x80x1 3/8	1
#417 31 3/4 x 78 1/4 x 1 3/8	1
#422 24 x 79 1/4 x 1 3/8	1
#43 24 x 79 1/4	1
#44 25 3/4 x 78 x 1 3/8	1
#445 31 3/4 x 79 3/4 x 1 3/8	1
#450 28 1/4x80x1 3/8	1
#451 32 1/8x79 1/2x1 3/8	1
#453 32 1/8 x 79 3/4 x 1 3/8	1
#455 30x78 1/2x1 3/8	1
#46. 32 x 81 x 1 3/8	1
#462 36 1/8x84 1/8x1 3/4	1
#463 35 7/8x83 3/8x1 3/4	1
#464 36 x 83 3/4 x 1 3/4	1
#465 29 3/4 x 83 x 1 3/8	1
#47 30 x 78 x 1 3/8	1
#49 27 1/4 x 79 1/4 x 1 3/8	1
#506 32 x 78 x 1 3/8	1
#509 29 7/8 x 80 3/4 x 1 3/8	1
#54. 31 1/2 x 80 1/4 x 1 3/4	1
#57. 28 x 84 x 1 3/8	1
#66. 30 x 95 1/4 x 1 3/8	1
#67 31 1/2 x 94 1/2 x 1 3/8	1
#68 30 1/2 x 95 1/2 x 1 3/4	1
#7. 29 3/4 x 78 1/4 x 1 3/8	1

#84. 24 x 72 1/2 x 1 1/8	1
#86. 24 1/4 x 72 x 1 3/8	1
498 23 3/4 x 78 3/4 x 1 3/8	1

Total: 83



#121. 30 x 78 x 1 1/8

Notes: Very unique door in thickness and details.



#123 29 7/8 x 77 1/8 x 1 3/8

Notes: Belmond, IA. CHIPPY PAINT. Hole from door bell extends all the way through



#132 29 5/8 x 77 1/2 x 1 3/8

Notes: Des Moines, Iowa. The backside is a MUST SEE In VGHM



#135 29 7/8 x 71 3/4 x 1 1/2

Notes: Beveled mirrored door of an unusual size. 1 1/2" thick



#161 31 1/4 x 82 1/2 x 1 3/8

Notes: Pink on one side white in the other. Des Moines, Iowa



#162 29 x 75 1/2 x 1 3/8

Notes: Des Moines, IA



#164 30 1/8 x 78 1/4 x 1 3/8

Notes: Des Moines, Iowa



#17 32 x 84 x 1 3/8

Notes: Garner, IA



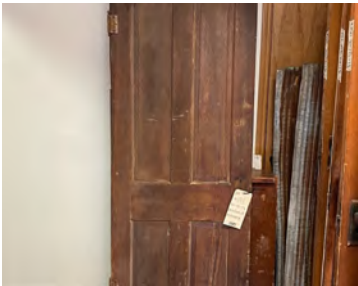
#171. 32 x 80 1/2 x 7/8

Notes: Unique chicken wire door for your garden space or even pantry. From Emmons, Iowa



#188 30 x 78 3/4 x 1 1/4

Notes: A collection from Deep River, IA



#193. 30 x 78 x 1 3/8

Notes: A collection from Deep River, IA



#194 29 7/8 x 76 7/8 x 1 3/8

Notes: Part of collection from Deep River, IA



#20. 35 3/4 x 75 x 1 3/4

Notes: Stewartville MN



#237 32 x 79 1/2 x 1 3/4

Notes: Newton, IA



#24 29 3/4 x 84 1/4 x 1 3/4

Notes: Beautiful Exterior thick door needs some refinishing. Solid wood.
Delamination occurring.



#244 30 1/4 x 77 3/4 x 1 3/8

Notes: Copper hardware



#252 30 x 83 x 1 3/8

Notes: Carroll, IA



#254 30 x 82 3/4 x 1 3/8

Notes: Carroll, IA



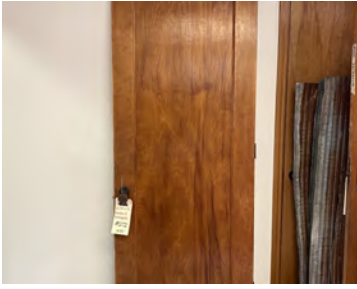
#270. 32 x 84 x 1 3/4

Notes: From a Mansion in Newton, Iowa. Condition of wood is EXCELLENT!



#271 32 x 84 1/2 x 1 3/4

Notes: From a Mansion in Newton, Iowa. The white side can either be as is with the cracked paint look or stripped. Condition of wood is...



#272. 32 x 83 3/4 x 1 3/4

Notes: From a Mansion in Newton, Iowa. The white side can either be as is with the cracked paint look or stripped. Condition of wood is...

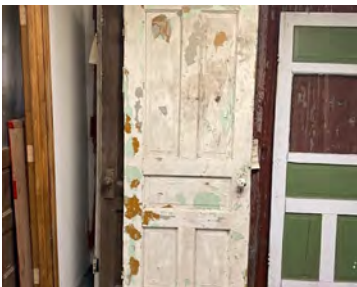


#279 & #280 36 x 96 x 2 1/4

Notes: Peoria, Illinois. Can be sold separate for 2,500.00 White walnut. Mortise & tenon



#3 30 x 77 1/2 x 1 1/8



#3.1 30 x 79 5/8



#307 36 1/4 x 84 x 1 3/4

Notes: Oelwein, IA uneven cut up top



#32 24 x 77 x 1 3/8

Notes: Mason City, IA Jamb: 25 3/4 x 80 1/4 x 3 1/4



#333 32 1/4 x 83 x 1 3/4

Notes: Very sturdy. Unique nail heads add charm. From Sheffield, IA



#337. 30 1/8 x 78 x 1 3/8



#337. 30 1/8 x 78 x 1 3/8

Notes: Old farmhouse door from Garner, IA



#338 32 x 80 1/4 x 1 1/4

Notes: Garner, IA. Old farmhouse before it was demolished.



#339. 30 x 77 1/2 x 1 3/8

Notes: Old farmhouse in Northern Iowa



#340. 28 x 77 3/8 x 1 3/8

Notes: Amazing chippy paint door from an old farmhouse in Northern Iowa.
In VGHM



#345. 35 3/4 x 82 x 1 3/4

Notes: Antique Door made into a Dutch door from Oelwein, IA



#346 32x79 1/2x1 3/8

Notes: has a butler swing



#349 29 1/4x79 1/8x1 3/8

Notes: Tornado twisted door



#351 30x78x1 3/8



#36. 30 x 78 1/4 x 1 3/8

Notes: Mason City, Iowa.



#369 32x80x1 3/8



#370 28 x 79 1/4 x 1 3/8



#371 32x79 1/4x1 3/8



#372 31 7/8x79x1 3/8



#374 31 7/8x79 1/4x1 3/8



#378 30x78x1 3/8



#379 27 7/8x78 1/4x1 3/8



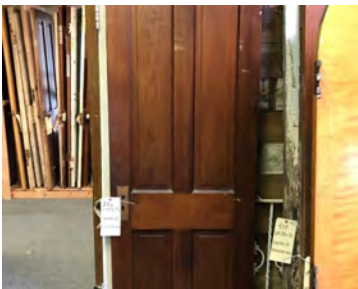
#379 30x79 1/2x1 3/8



#382 34 3/8 x 82 x 1 7/8



#384 30 1\8 x 79 3\4 x 1 3\8



#386 30 x 80 1/8 x 1 3/8



#387 30x80 1/4x1 3/8



#39 30 x 80 x 1 3/8

Notes: Mason City, Iowa. Excellent condition



#393 24 1/8x80x1 3/8



#396 27 3/4x80 1/2x1 3/8

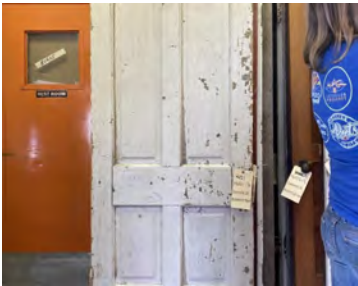


#399 30x79 1/4x1 3/8

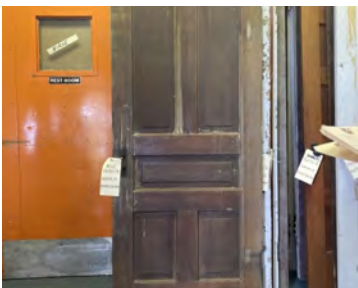


#40. 23 3/4 x 78 3/4 x 1 3/8

Notes: Beautiful, clean door. Mason City, IA



#401 34 1/2x82x1 7/8



#402 32 1/8x80x1 3/8



#417 31 3/4 x 78 1/4 x 1 3/8



#422 24 x 79 1/4 x 1 3/8



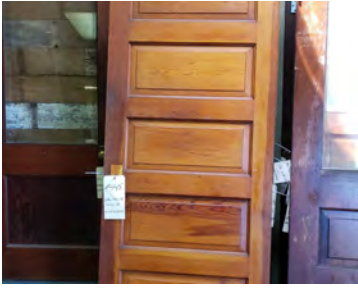
#43 24 x 79 1/4

Notes: Mason City, IA



#44 25 3/4 x 78 x 1 3/8

Notes: Mason City, Iowa



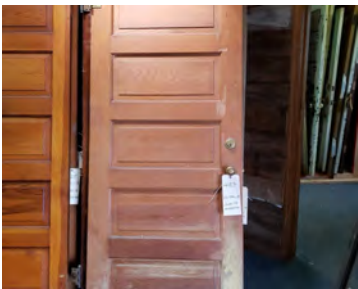
#445 31 3\4 x 79 3\4 x 1 3\8



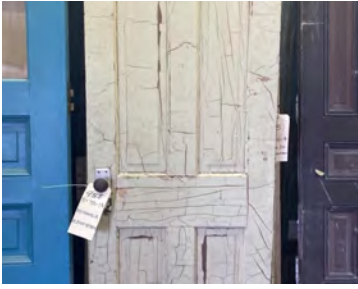
#450 28 1\4x80x1 3\8



#451 32 1\8x79 1\2x1 3\8



#453 32 1\8 x 79 3\4 x 1 3\8

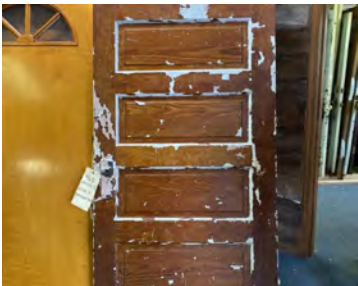


#455 30x78 1/2x1 3/8



#46. 32 x 81 x 1 3/8

Notes: Use backside and hide against a wall or swing into a closet. Solid door from Mason City, Iowa



#462 36 1/8x84 1/8x1 3/4



#463 35 7/8x83 3/8x1 3/4



#464 36 x 83 3/4 x 1 3/4

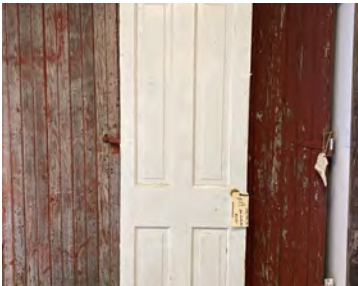


#465 29 3/4 x 83 x 1 3/8



#47 30 x 78 x 1 3/8

Notes: Part of a set from Mason City, IA. Ok to break up set. Door knob can be purchased from a reproduction site or Etsy.



#49 27 1/4 x 79 1/4 x 1 3/8

Notes: Blue Earth, MN



#506 32 x 78 x 1 3/8

Notes: Dumont, IA



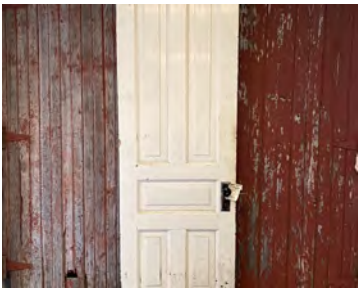
#509 29 7/8 x 80 3/4 x 1 3/8

Notes: Green paint. Oelwein, IA



#54. 31 1/2 x 80 1/4 x 1 3/4

Notes: Heavy exterior door. Mason City, Iowa



#57. 28 x 84 x 1 3/8

Notes: Sturdy beauty from Mason City, Iowa



#66. 30 x 95 1/4 x 1 3/8

Notes: Being stripped. Will be prepped and ready for someone to paint or stain. Those Hinges!!! Rare 8' solid wood door from Pella, Iowa....



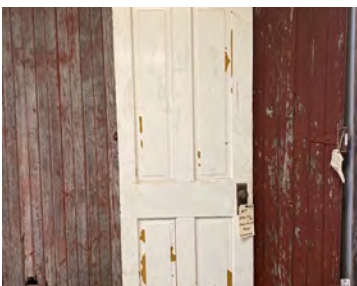
#67 31 1/2 x 94 1/2 x 1 3/8

Notes: Being stripped and will be prepped and ready for paint or stain. Unique 8' tall door. Rare find for a solid wood door.



#68 30 1/2 x 95 1/2 x 1 3/4

Notes: Actual width 31 1/2 but needs side taken off due to hinge insert which will result in 30 1/2



#7. 29 3/4 x 78 1/4 x 1 3/8

Notes: Came from Mason City, IA. Beautiful cracking paint.



#84. 24 x 72 1/2 x 1 1/8

Notes: Great door from an old farmhouse in Ackley, Iowa



#86. 24 1/4 x 72 x 1 3/8

Notes: 4 Generation Farmhouse from Northern Iowa



498 23 3/4 x 78 3/4 x 1 3/8

Notes: Clarinda IA. Painted white in one side