

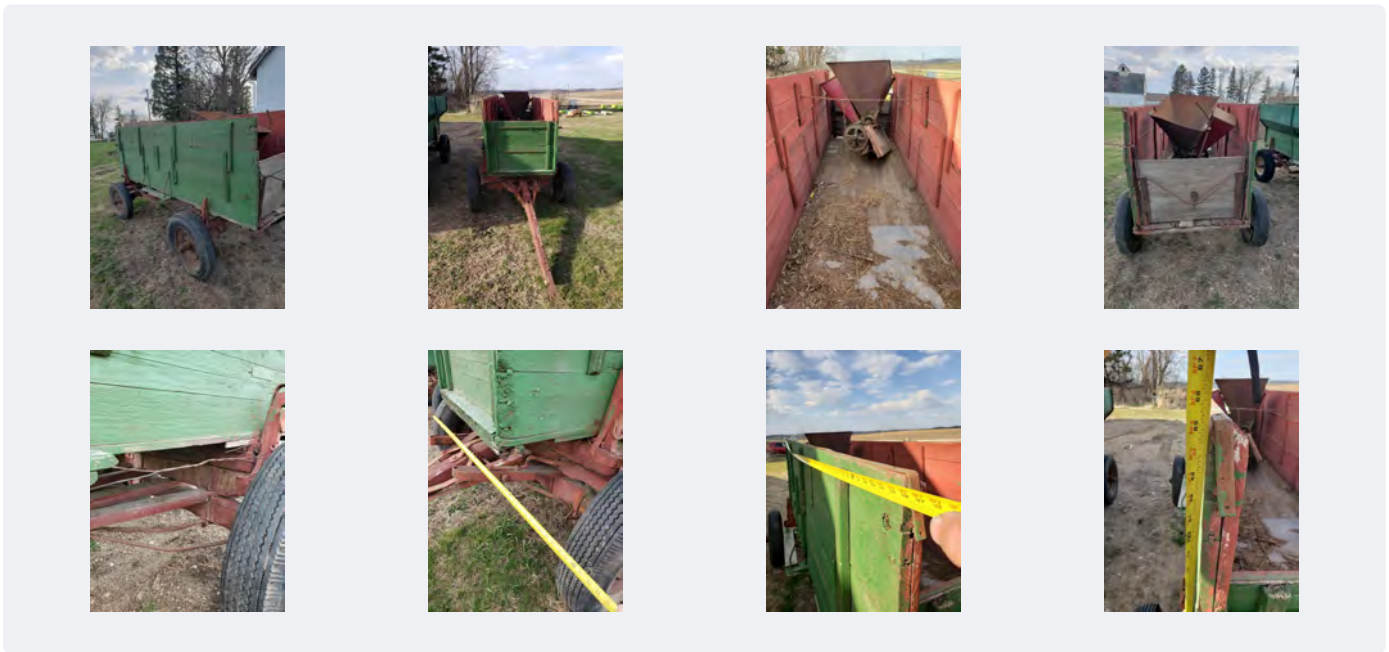


Antique Grain Wagon

Standard fields

Notes:

65" tall from ground to top
127" long without tongue
190" with tongue
Box is 62" wide
Has built in step
Working chute
Original paint
Wooden axels



Antique Oat Spreading Grain Wagon - Straight Wall

Standard fields

Notes:

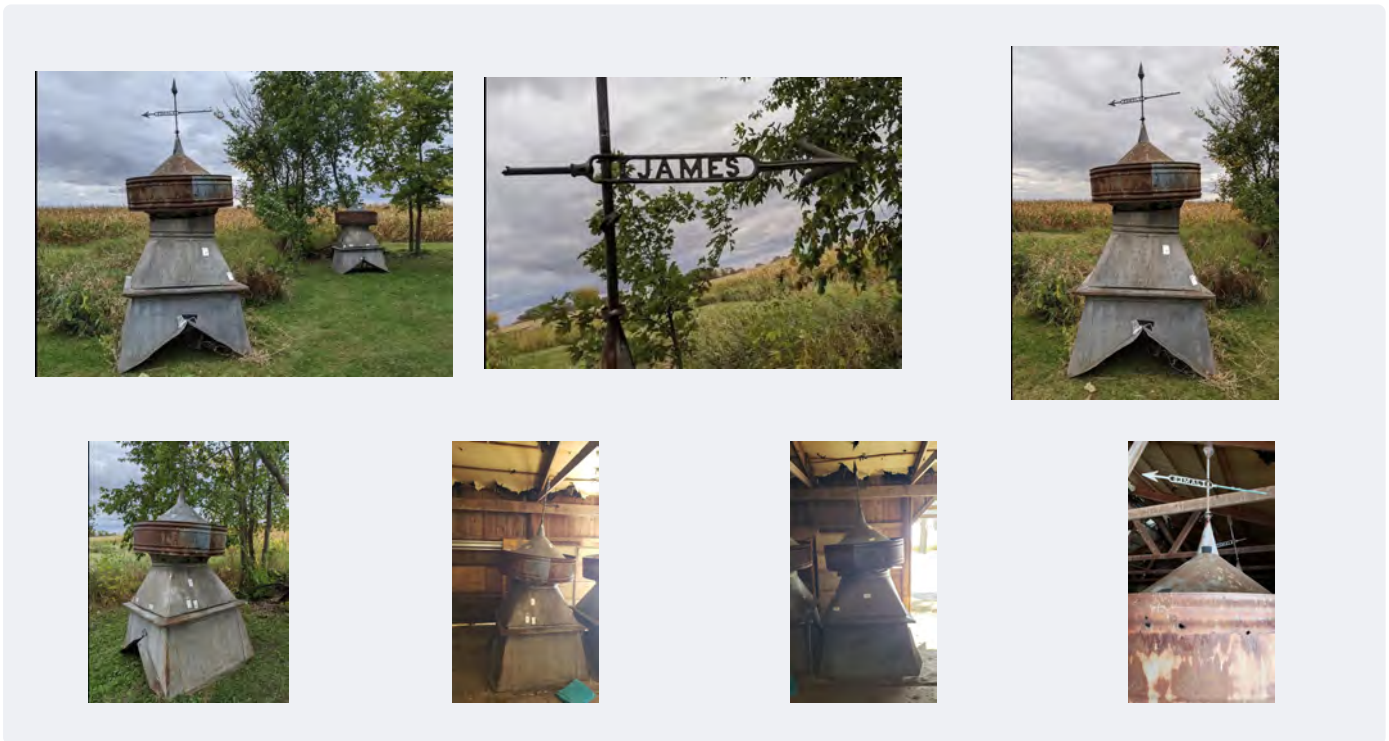
65" tall (from ground to top)
126" long without tongue
190" long with tongue
Box is 62" across
Includes oat spreading mechanism
Original paint
Wooden axles



Iron Grate

Standard fields

Notes: 13" x 48 7/8" x 1 1/4"



Large Cupola with original “James” weather vane

Standard fields

Notes:

Original “James” cast iron weather vane still attached. Tops come off and can be adjusted so that they sit straight. 8’ to top of point and 2’ to top of weather vane so 10’ tall. 4’ x 4’ base. Both weather vanes still have an arrow on each end. Strips of tape are covering some bullet holes. (Farmhouse living 😊)

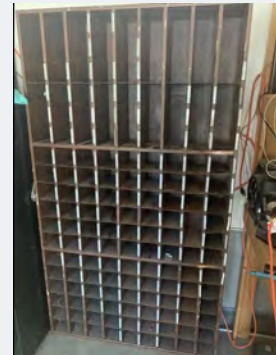
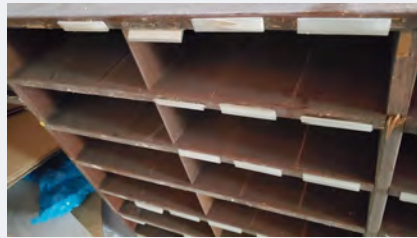


Old Duck Boat 1940s

Standard fields

Notes:

Vintage handmade boat from the 40's. 172 1/2" x 41 3/8"

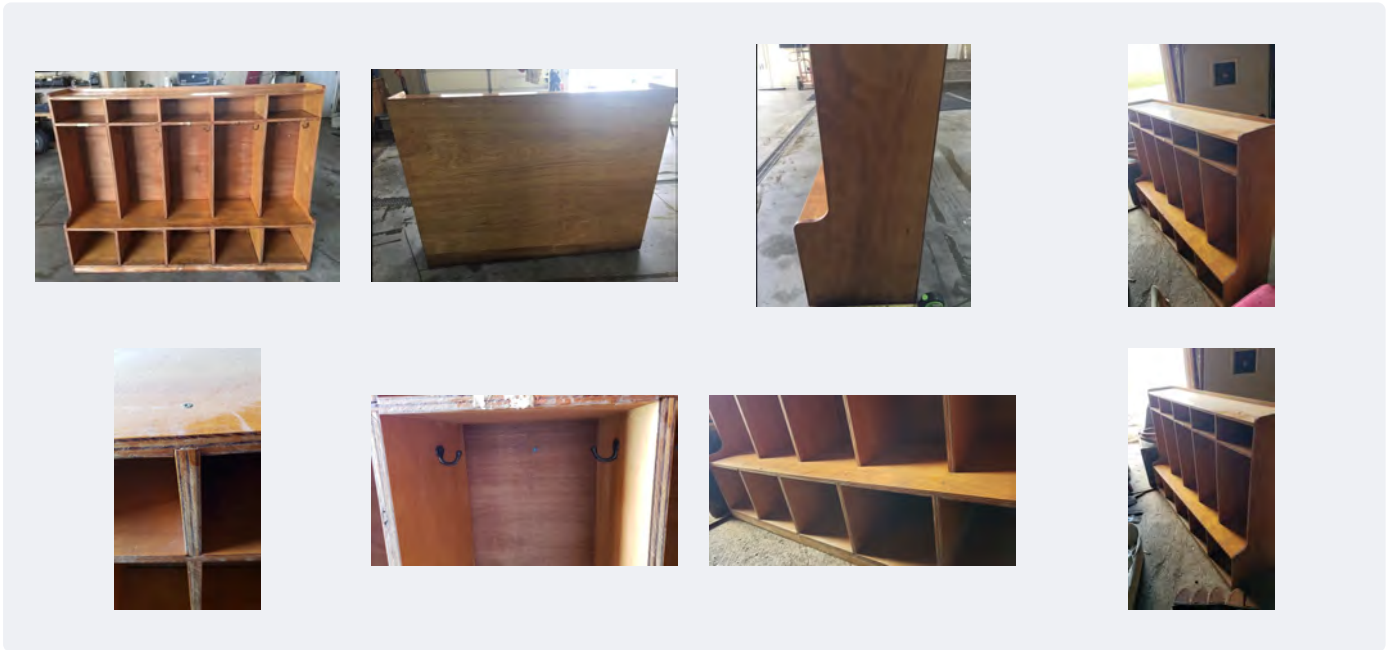


Vintage Mail Sorter / Cubbies

Standard fields

Notes:

77" long x 44" tall x 9.5" deep. 126 slots. Most slots are 4"x 4". Dividers can be removed or cut to create larger slots. Adhesive label stickers are still attached



Vintage School Locker

Standard fields

Notes: 4' tall x 5.5' wide x 16.25" deep.